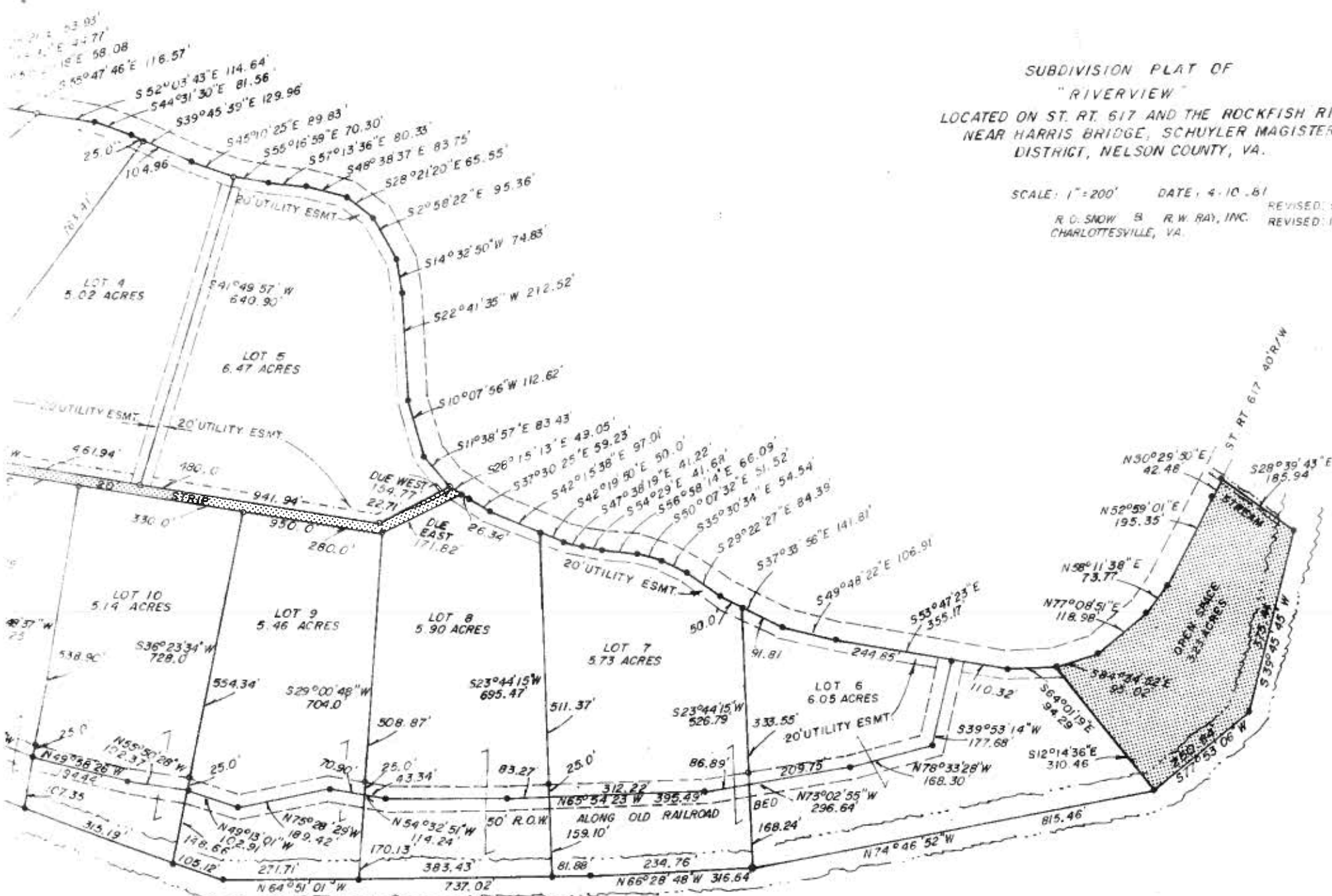


SUBDIVISION PLAT OF  
 "RIVERVIEW"  
 LOCATED ON ST. RT. 617 AND THE ROCKFISH RIVER,  
 NEAR HARRIS BRIDGE, SCHUYLER MAGISTERIAL  
 DISTRICT, NELSON COUNTY, VA.

SCALE: 1" = 200' DATE: 4-10-81

R.O. SNOW & R.W. RAY, INC.  
 CHARLOTTESVILLE, VA.

REVISED: 5-12-81  
 REVISED: 1-5-82 TO CHANGE UTILITY EASEMENTS



CERTIFICATION TO BE CORRECT DATE <i>2-2-81</i>	OWNERS APPROVAL THE SUBDIVISION OF THIS LAND IS WITH MY FULL CONSENT AND APPROVAL. <i>Mitchell O Carr</i>
ZONING COMMISSION : <i>2-2-81</i>	STATE OF VIRGINIA, COUNTY OF ALBEMARLE, TO - WIT : THE FOREGOING INSTRUMENT WAS ACKNOWLEDGED BEFORE ME, THIS <u>2</u> DAY OF <u>June</u> <u>1981</u> AS OWNER <i>James W. Gray</i> NOTARY PUBLIC
BOARD OF SUPERVISORS : <i>Will</i>	

ROSE M. SNEA  
 D.B. 140-473 (P. 1) 481 (P. 1a)  
 SARA A. GRAY  
 D.B. 142-264 (P. 1) 131-481 (P. 1a)

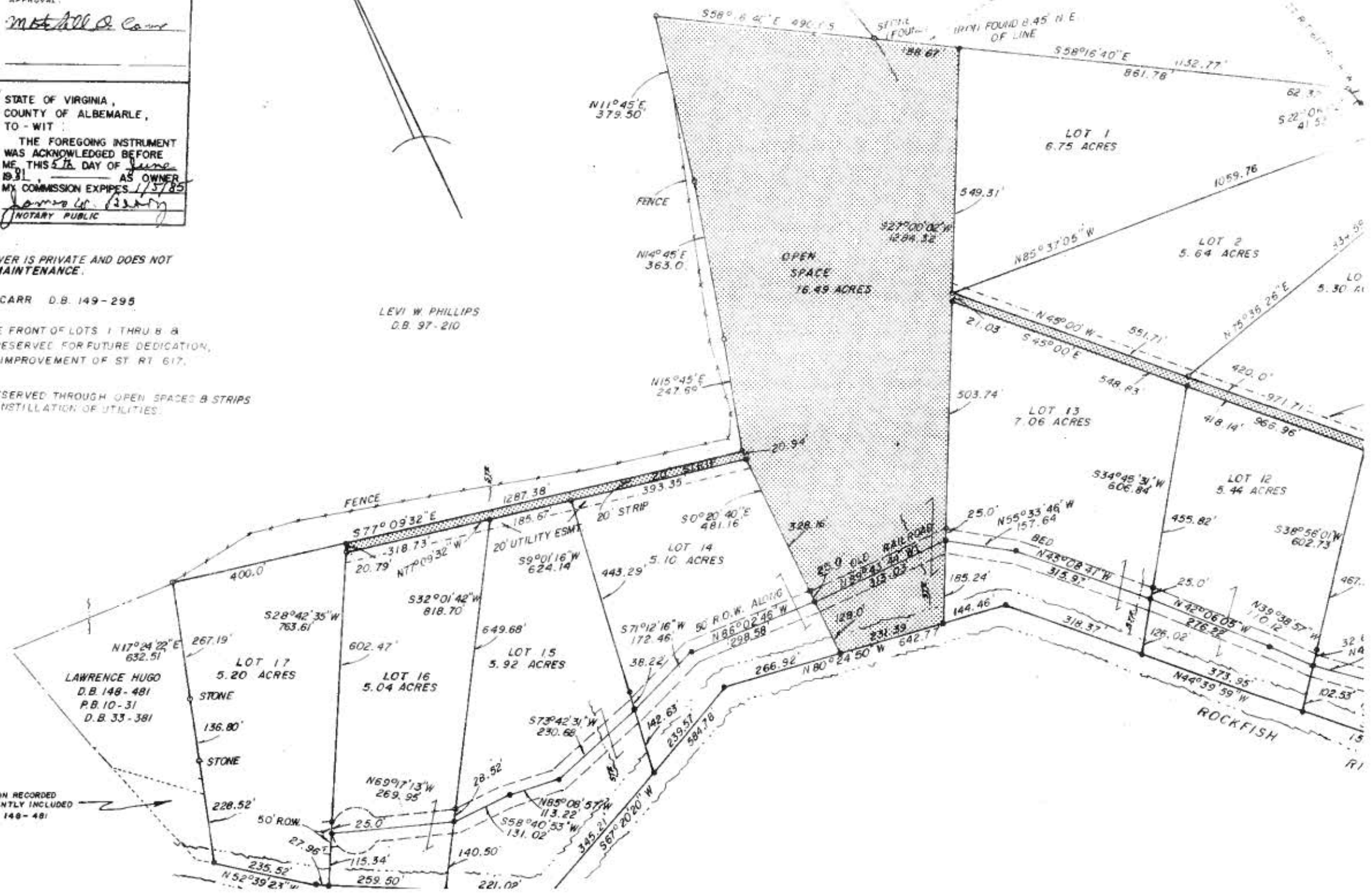
THE ROAD ALONG THE RIVER IS PRIVATE AND DOES NOT  
 QUALIFY FOR STATE MAINTENANCE.

OWNER: MITCHELL O. CARR D.B. 149-295

A 5' STRIP, ALONG THE FRONT OF LOTS 1 THRU B &  
 3.23 AC. OPEN SPACE, RESERVED FOR FUTURE DEDICATION,  
 IF REQUIRED FOR THE IMPROVEMENT OF ST. RT. 617.

UTILITY EASEMENTS RESERVED THROUGH OPEN SPACES & STRIPS  
 AS REQUIRED FOR THE INSTALLATION OF UTILITIES.

LEVI W. PHILLIPS  
 D.B. 97-210



NOT INCLUDE IN TRANSACTION RECORDED  
 D. 58 - 588, BUT SUBSEQUENTLY INCLUDED  
 TRANSACTION RECORDED IN D.B. 149 - 481